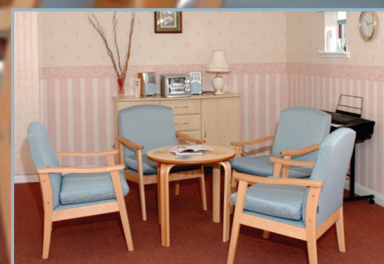


Bield Housing, Chalybeate Court



Following input from Bield Housing Association into the design and development of its Selkirk range, Knightsbridge Furniture has announced that a consignment of seating and occasional furniture – including examples from the Selkirk collection – has now been installed in Bield's Chalybeate Court complex.

Sited in Kilwinning, near Irvine in Ayrshire, Chalybeate Court provides elderly residents with sheltered accommodation including communal facilities. Design requirements specified by the housing officer Alison Allan included impervious upholstery fabrics and the availability of various options in seat height and depth to accommodate the needs of individual residents. Throughout the project, there has also been an over-riding expectation that a welcoming and relaxed hotel-like ambience will be maintained in all areas of the complex.

Examples from the Knightsbridge Care portfolio have been specified for the reception, quiet rooms, community lounge and dining area: a key component of the order was Selkirk seating, which was developed by Knightsbridge after consultation with the Bield team.

Including high-back and mid-back armchairs in both standard and petite sizes, Selkirk features shaped arms to allow easy independent rising, together with a sprung seat to ensure a comfortable sitting position even after extended periods. A reversible cushion keeps fabric wear to a minimum, and the Selkirk is available in a wide range of upholstery options, including waterproof and anti-bacterial fabrics.

In addition to Selkirk seating, the Chalybeate Court order included armchairs in various sizes and configurations from the Knightsbridge Zeta, Rossetti and Gavotte collections, plus Gamma tables in a natural wood finish for dining and social activities.