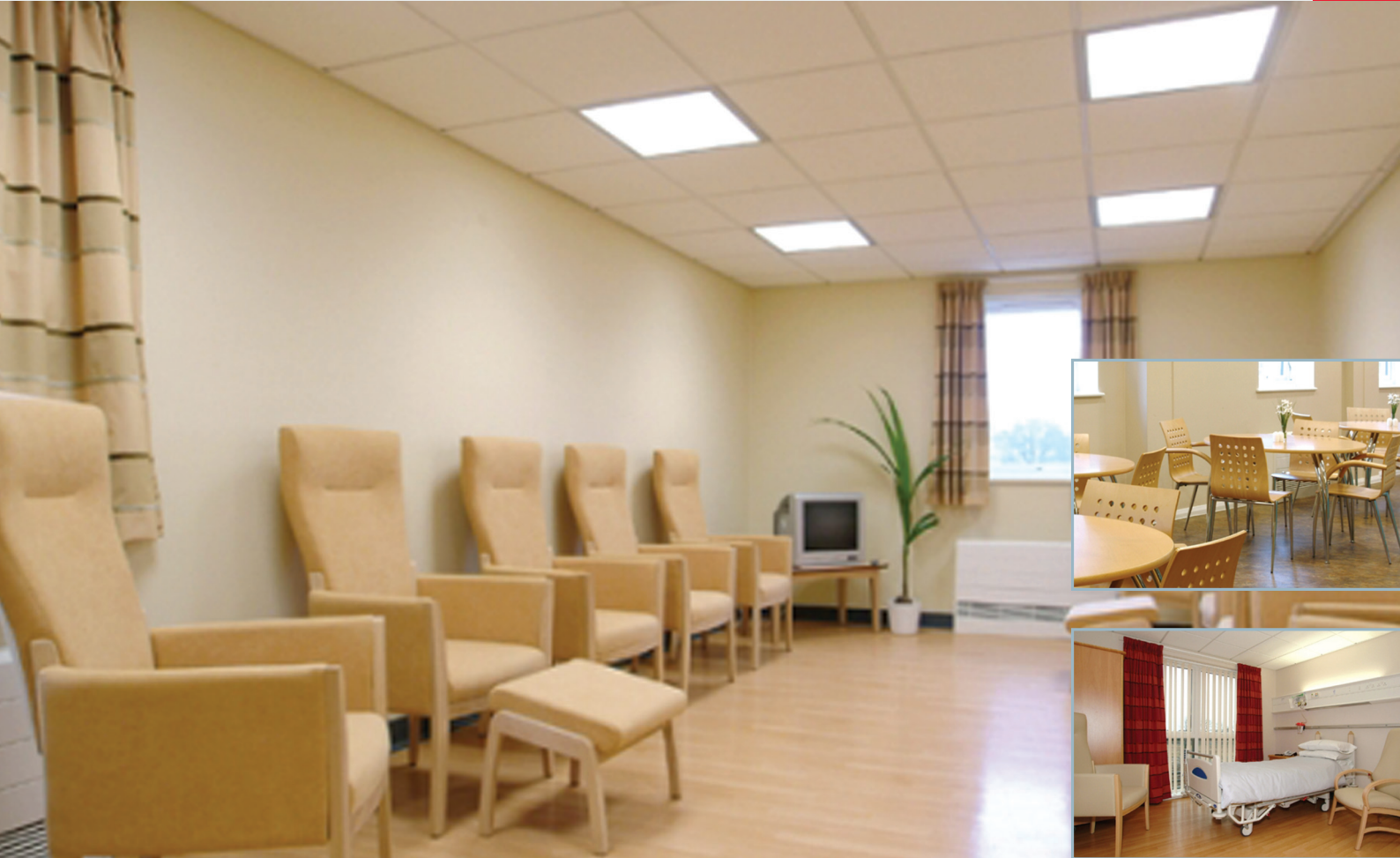


Capio Clifton Park Treatment Centre, York



Seating, tables and occasional furniture have been supplied to two new treatment centres just opened by Capio Healthcare. The centres are sited at Clifton Park in York and in Horton, Oxfordshire, and form part of the latest wave of treatment centres being developed by Capio.

For in-patient bedrooms, Knightsbridge has supplied high-back chairs from its Rossetti and Arran ranges. Rossetti seating combines the comfort of supportive upholstery with fresh, contemporary styling, whilst Arran armchairs offer fixed and drop-arm options to ensure a practical response to individual mobility needs. Treatment and recovery rooms have also been equipped with models from the Knightsbridge Healthcare Furniture portfolio.

Knightsbridge's Kintyre range of multi-function recliners combines a contemporary design ethos with a full range of comfort, hygiene and safety features, and includes models with a motorised reclining action operated by a patient-friendly handset to facilitate comfort and accessibility for patient and carer alike.

Visitor areas throughout both centres have been populated by the stylish yet practical Knightsbridge Delta stacking chairs, whilst the patient and staff dining areas feature the company's Rondo dining tables and chairs in a warm and natural beech finish. These are supplemented by Shelley sofas and Balerno coffee tables arranged in intimate corner settings, providing a welcoming feel for patients and staff alike.